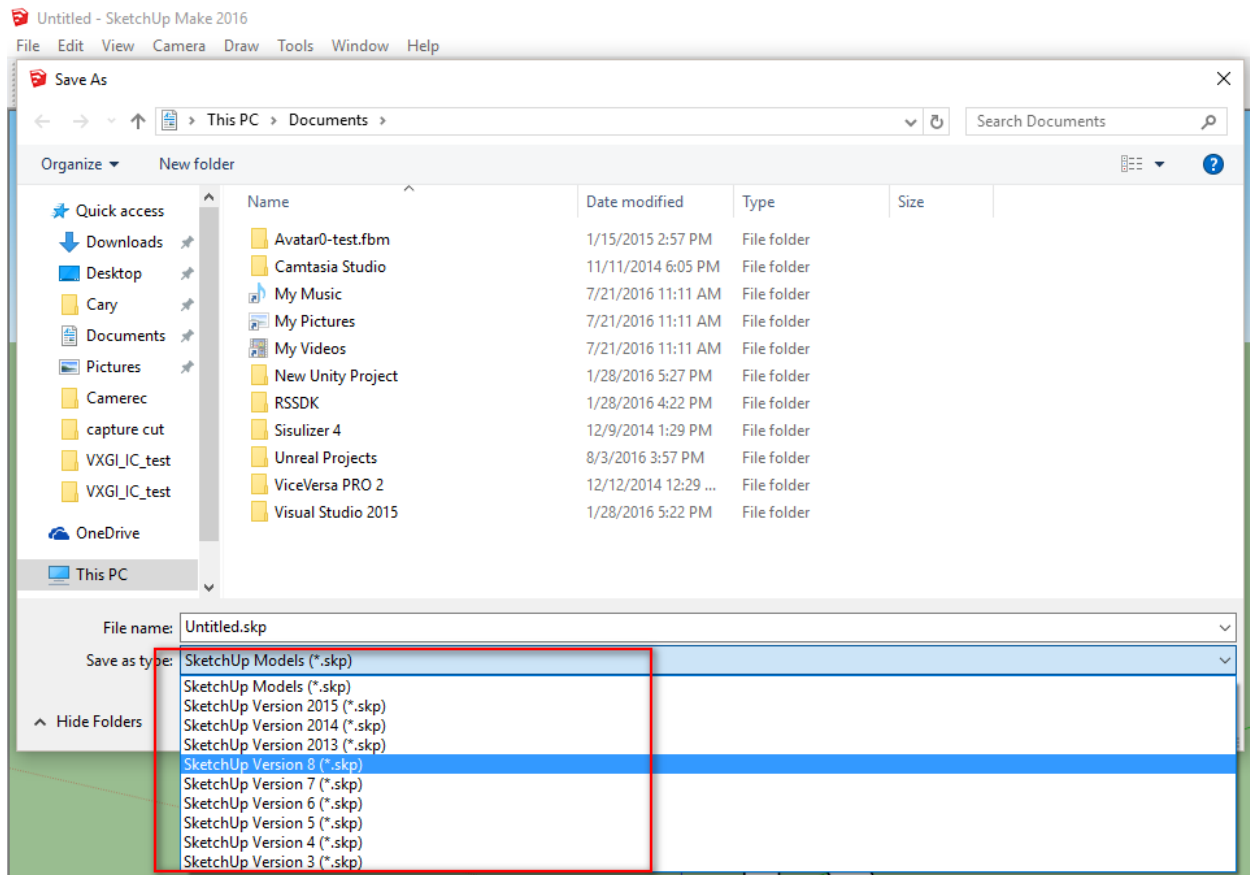


How to stop 3DXchange 6 from crashing when I open SketchUp files from 3D Warehouse?

Simply save the file as a previous SketchUp version, prior to importing it into 3DXchange 6.



Reallusion FAQ

<https://kb.reallusion.com/Product/51464/How-to-stop-3DXchange-6-from-crashing-when-I-open-SketchUp>