

How to activate Faceware Realtime for iClone to the Full version?

If you have already installed the Faceware Realtime for iClone trial version on your computer, then you may skip to Step #3 to directly activate the license.

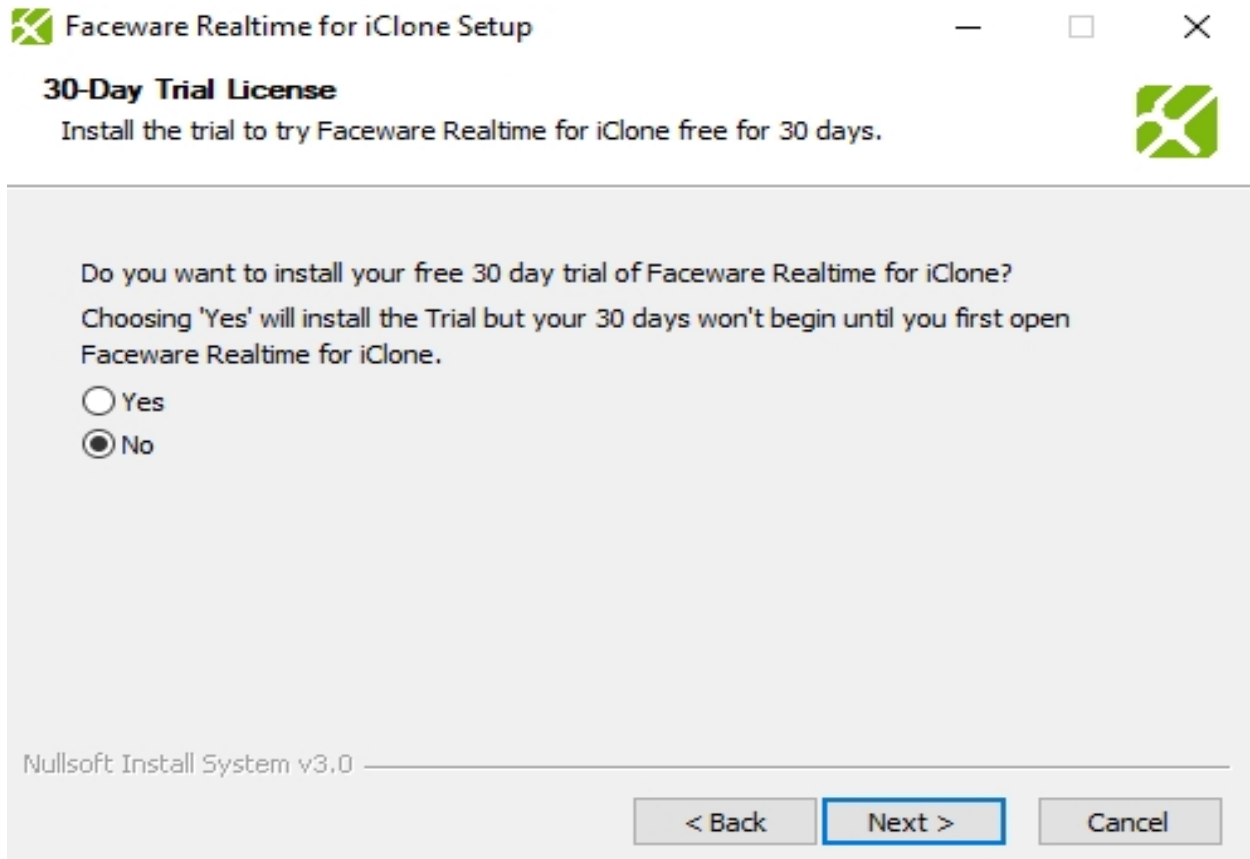
Activation Instructions: -

1) Download the Faceware Realtime for iClone installer from your Member account – Order page.

Note: Faceware Realtime for iClone does not have a separate installer for the trial version. Once you purchased the full license, then it will override the trial license after activating the Ticket (Serial Number).

2) Simply follow and accept the default settings unless you need to do some custom configurations.

During the Faceware Realtime for iClone installation, choose 'NO' for the 30 Days Trial, if you already own a Ticket (Serial Number).



How to activate Faceware Realtime for iClone to the Full version?

3) The Serial Number which is made up by 25 characters is the "Ticket" for Faceware. You can extract it from your Member account - Order page under Bonus/Serial #.

OrderID	Product	Qty	Price	Date(UTC)	Download	Export	More Info
- [redacted]	C: iClone Facial Mocap Plug-in for Faceware + Faceware Realtime for iClone	1	USD \$699.00	09/25/2017	View detail	N/A	
[redacted]	iClone Facial Mocap Plug-in for Faceware	1	USD \$0.00	09/25/2017	Download	N/A	
[redacted]	Faceware Realtime for iClone	1	USD \$0.00	09/25/2017	Download	N/A	Serial #

4) Visit the Faceware site to activate the Ticket (Serial Number): -

<http://my.facewaretech.com/license-activation>

Then simply follow the instructions to activate the product. We recommend using another browser other than the Google Chrome browser, to activate the Ticket (Serial Number), eg: Firefox or Edge.

1.

Home Auto Update English

Faceware License Activation

Welcome to CodeMeter License Central WebDepot. You can transfer your licenses to your CmContainer using this WebDepot. Please enter your ticket and click "Next".

Ticket:
RLT [redacted]

I'm not a robot reCAPTCHA Privacy-Terms

Next

2.

Home My Licenses Auto Update English


My Licenses

Name	Activated On	CmContainer	Status
Realtime for iClone			Available: 1 (1)

Activate Licenses

How to activate Faceware Realtime for iClone to the Full version?

3.

Home My Licenses Auto Update English 


Available Licenses

To activate your licenses:


1. Select the licenses you want to activate.
2. Select the locally connected CmContainer to which you want to transfer the licenses.
3. Click "Activate Selected Licenses Now".

<input checked="" type="checkbox"/>	Name	Activated On	CmContainer	Status
<input checked="" type="checkbox"/>	Realtime for iClone			Available

Select CmContainer

Get CmContainer automatically 


Activate Selected Licenses Now Offline license transfer

 My Licenses

4.

Online License Transfer

Starting license transfer.
Downloading license template.
Registering license template.
Creating license request.
Downloading license update.
Importing license update to CmContainer.
Creating receipt.
Uploading receipt.

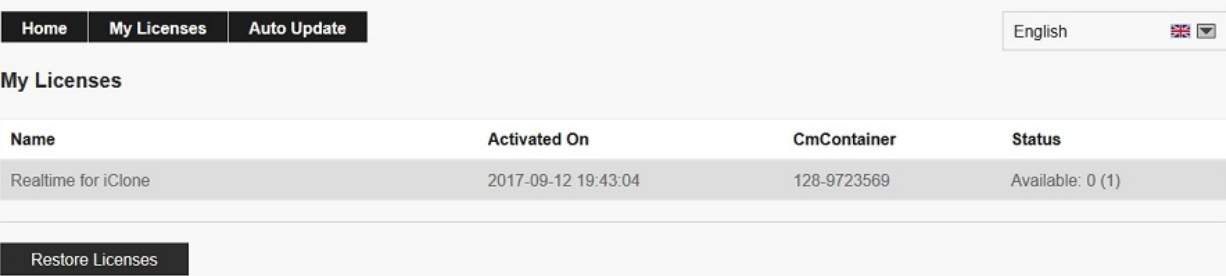


License transfer completed successfully!

OK

How to activate Faceware Realtime for iClone to the Full version?

5.

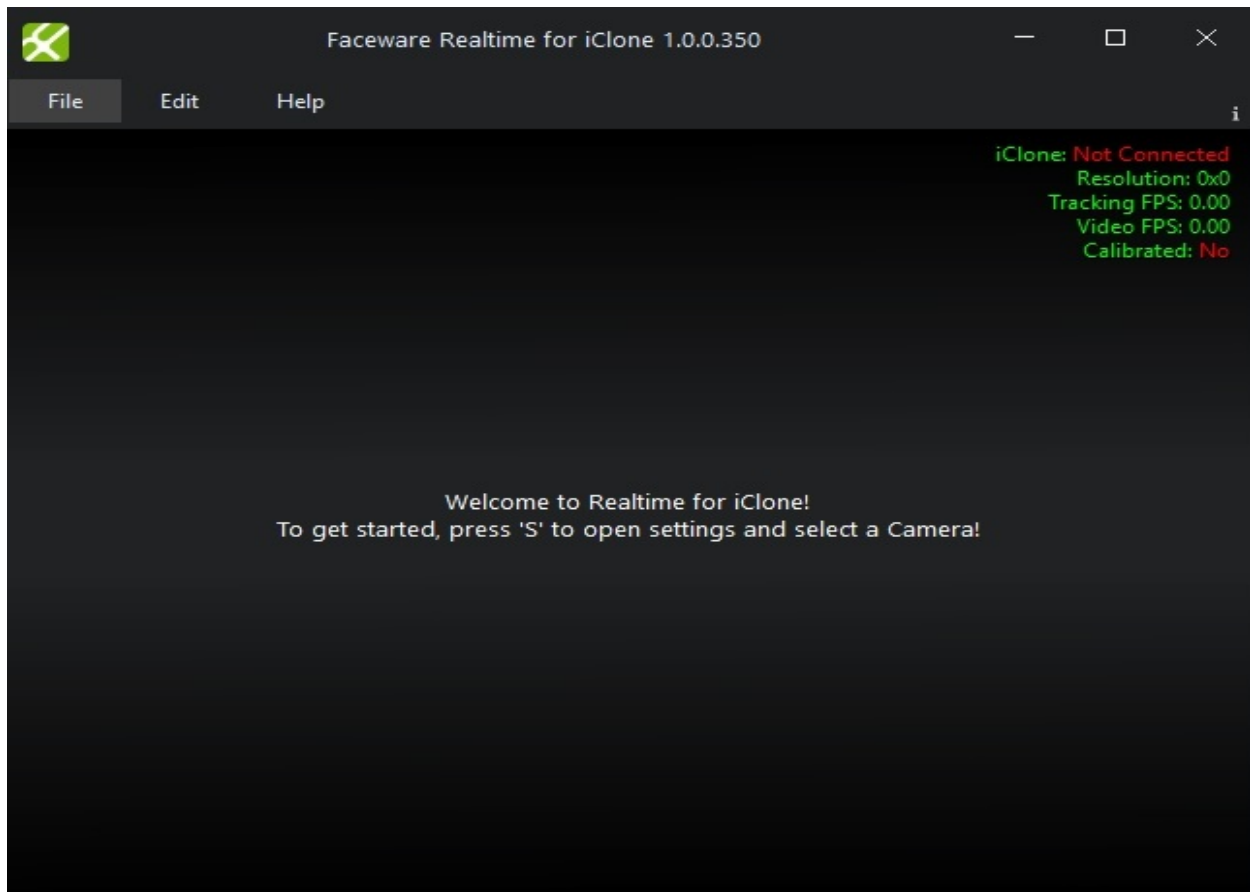


The screenshot shows the 'My Licenses' section of the Faceware Realtime for iClone application. At the top, there are navigation buttons for 'Home', 'My Licenses', and 'Auto Update'. A language dropdown menu is set to 'English'. Below the navigation, the 'My Licenses' section contains a table with the following data:

Name	Activated On	CmContainer	Status
Realtime for iClone	2017-09-12 19:43:04	128-9723569	Available: 0 (1)

Below the table, there is a 'Restore Licenses' button.

Known Issue (had been fixed in v1.1.0.360): ~~Currently, if you have a Trial license installed and have activated a Full license Ticket (Serial Number), then Faceware Realtime for iClone will use the Trial license until it expires in 30 days. This does not affect the functionality. The only functional difference is that the title bar says Trial License. That being said, the Faceware application will become the Full version upon the next update for Faceware Realtime for iClone.~~



How to activate Faceware Realtime for iClone to the Full version?

***Faceware Realtime for iClone is the face tracking software provided by Faceware Technologies Inc. Please refer to the [Faceware Service Notice](#).**

Reallusion FAQ

<https://kb.reallusion.com/Product/52568/How-to-activate-Faceware-Realtime-for-iClone-to-the-Full-version>