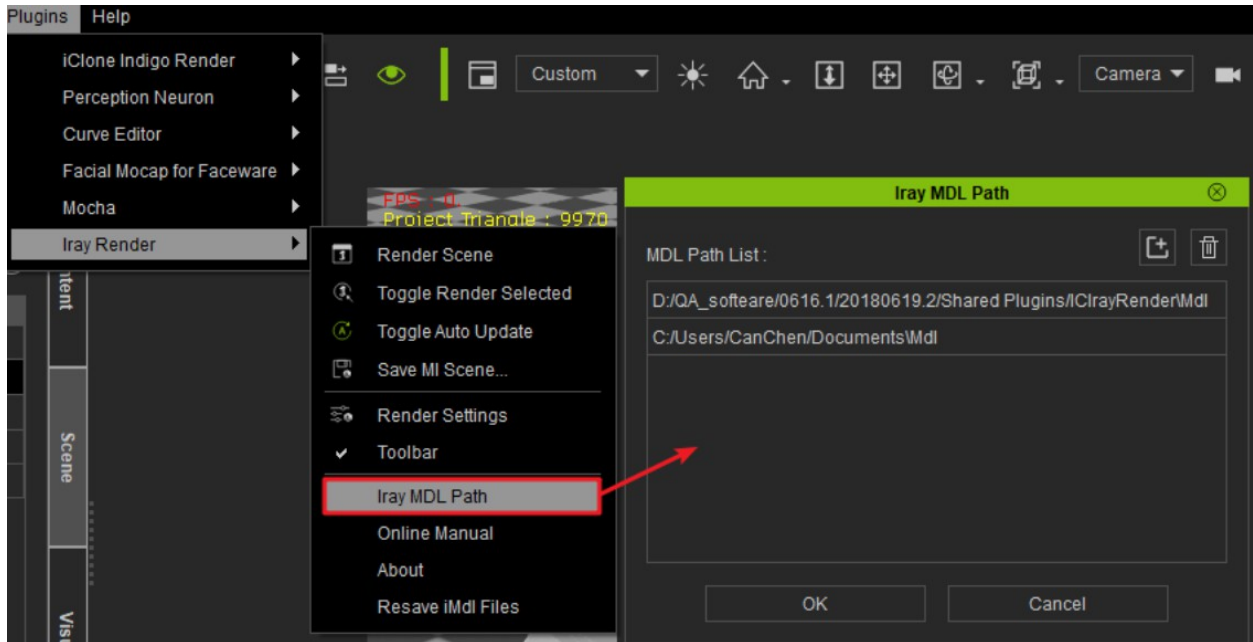
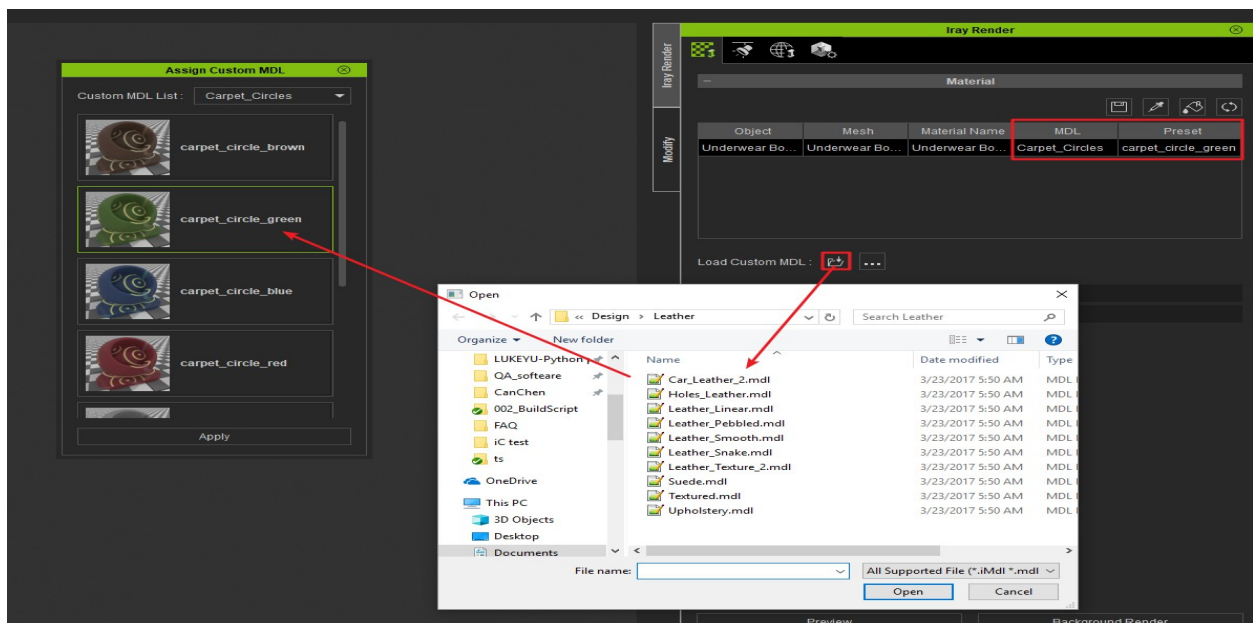


Can I use external custom MDLs with the Iray render plugin?

1) In order to use external MDLs, one must first make sure the path directory is added to the Iray MDL Path list: (menu) > Plugins > Iray Render > Iray MDL Path.



2) Perform Iray Render (panel) > Material > Load Custom MDL to import the external MDL shader.



Can I use external custom MDLs with the Iray render plugin?

Reallusion FAQ

<https://kb.reallusion.com/Product/52713/Can-I-use-external-custom-MDLs-with-the-Iray-render-plugin>