

How to install NVIDIA Omniverse?

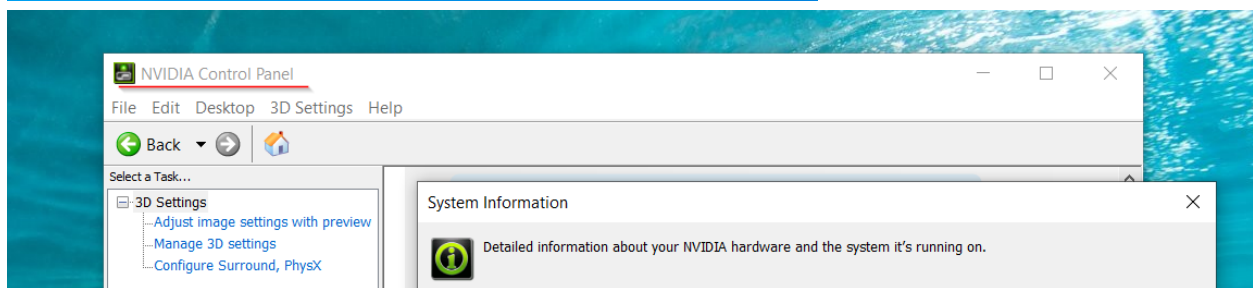
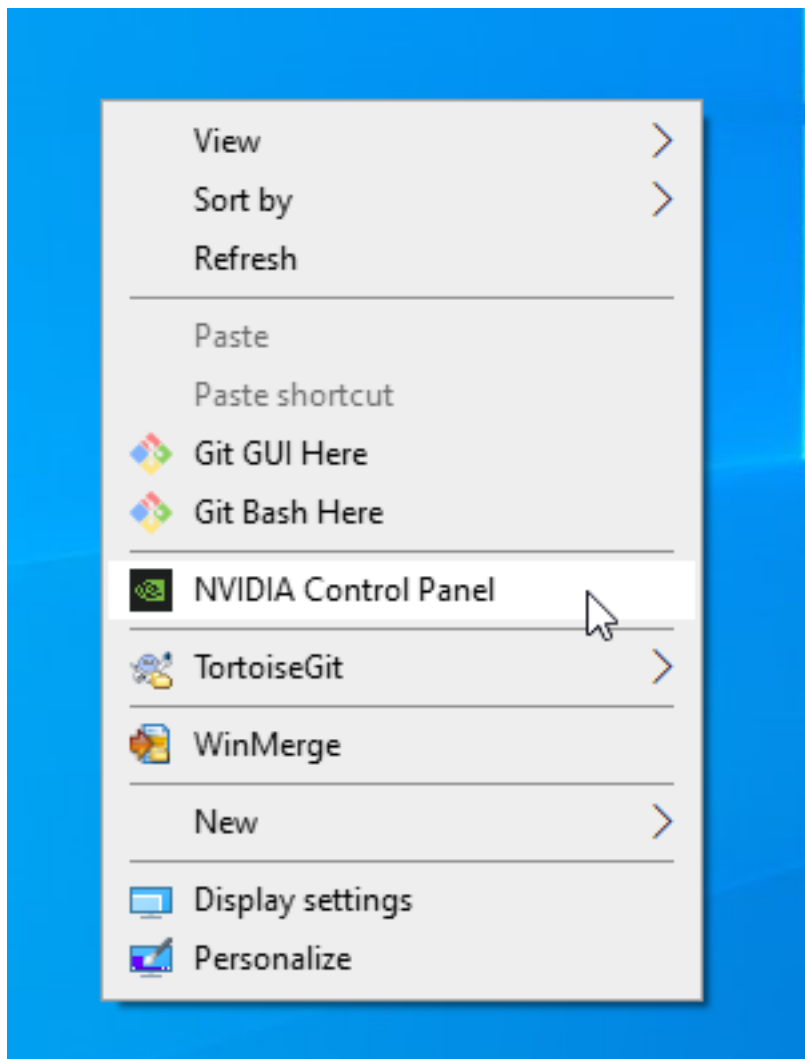
1) Make sure that your graphics card has been updated with one of the NVIDIA Recommended Drivers.

[Minimum Video Driver Version](#)

[NV Recommended Drivers](#)

Please download and install the proper driver, if the current driver version is incompatible.

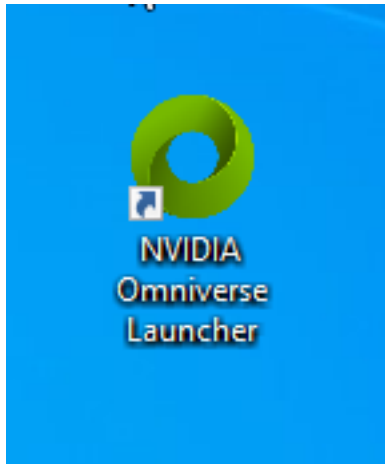
Note: You can verify the driver version via NVIDIA Control Panel or NVIDIA GeForce Experience.



How to install NVIDIA Omniverse?

2) Go to [NVIDIA Omniverse beta website](#) and download the open beta program.

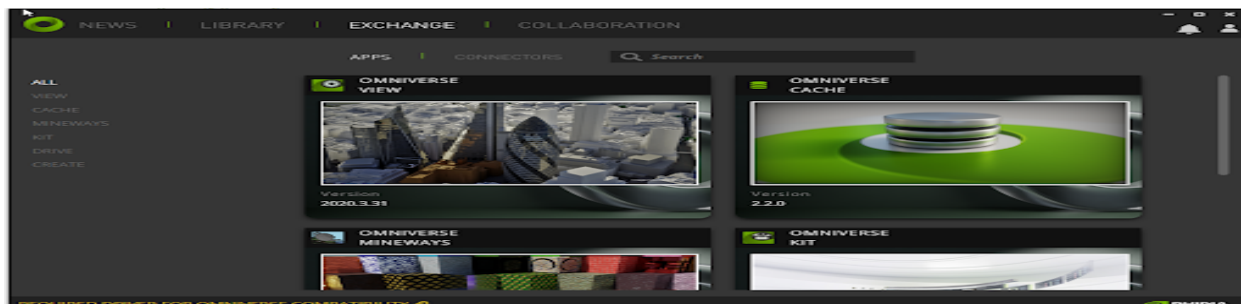
3) Once installed, open the Omniverse Launcher.



4) Install all of the necessary applications via **Omniverse Launcher > Exchange > APPS**.

An Overview of the Omniverse Lanucher Applications:

- **Exchange > Apps > Create**: for animations and creation of videos.
- **Exchange > Apps > View**: for architectural visualization.
- **Exchange > Apps > Drive/Cache and Collaboration**: for online collaboration and project management.
- **Exchange > Connectors**: a view of data transmission plugins for various applications like Maya, 3ds Max, Unreal, etc.



How to install NVIDIA Omniverse?

Reallusion FAQ

<https://kb.reallusion.com/Product/52976/How-to-install-NVIDIA-Omniverse>