

Why does my character's orientation and motion behave unexpectedly when I connect a device to Motion LIVE and press the "Set T-Pose" button?

Different gears and devices have varying X, Y, and Z settings in their native coordinate systems and may require different directional settings when setting the t-pose. The following is a list of facing directions for brand-specific devices:

Vicon: Any (adjustable)

Optitrack: +Z

Xsens: +X

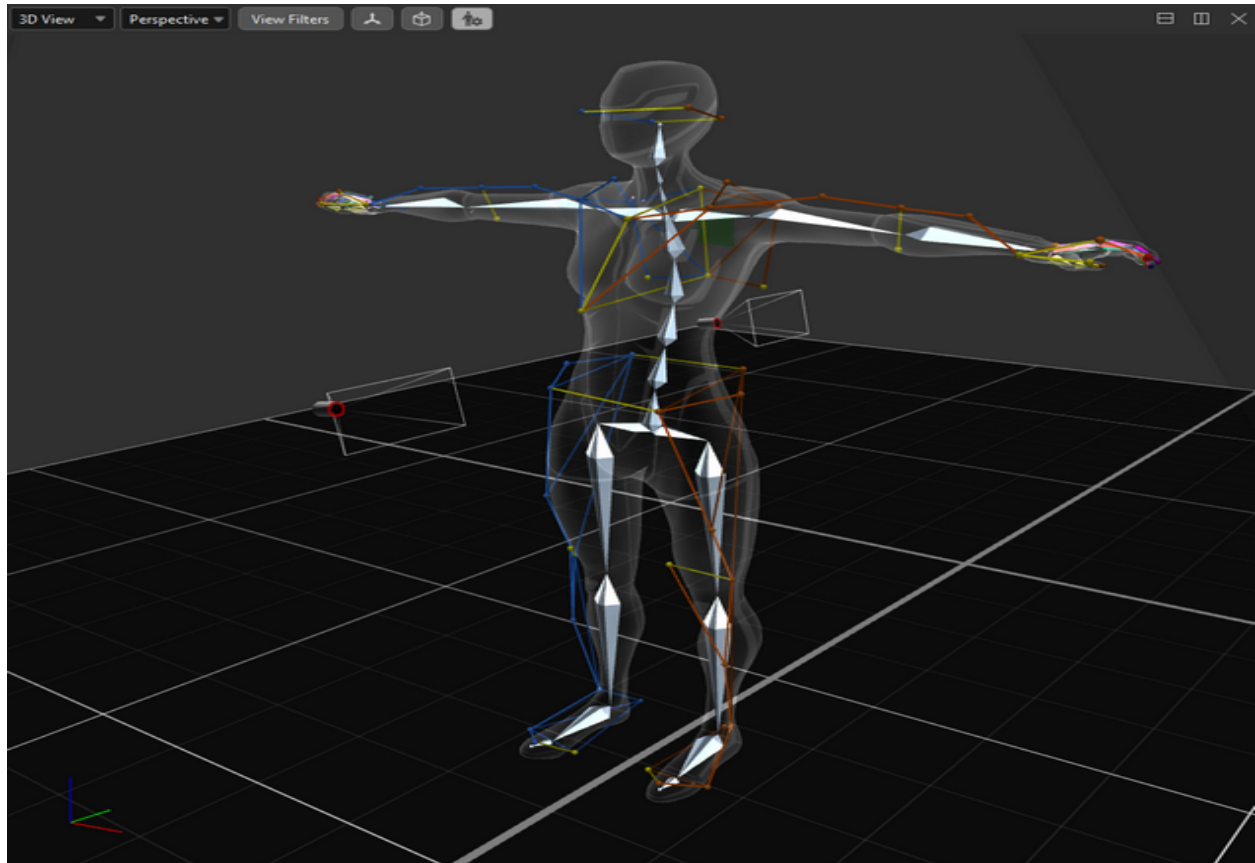
Neuron/Neuron gloves: +Z

Leap Motion: +Z

Rokoko/Rokoko gloves: +Z

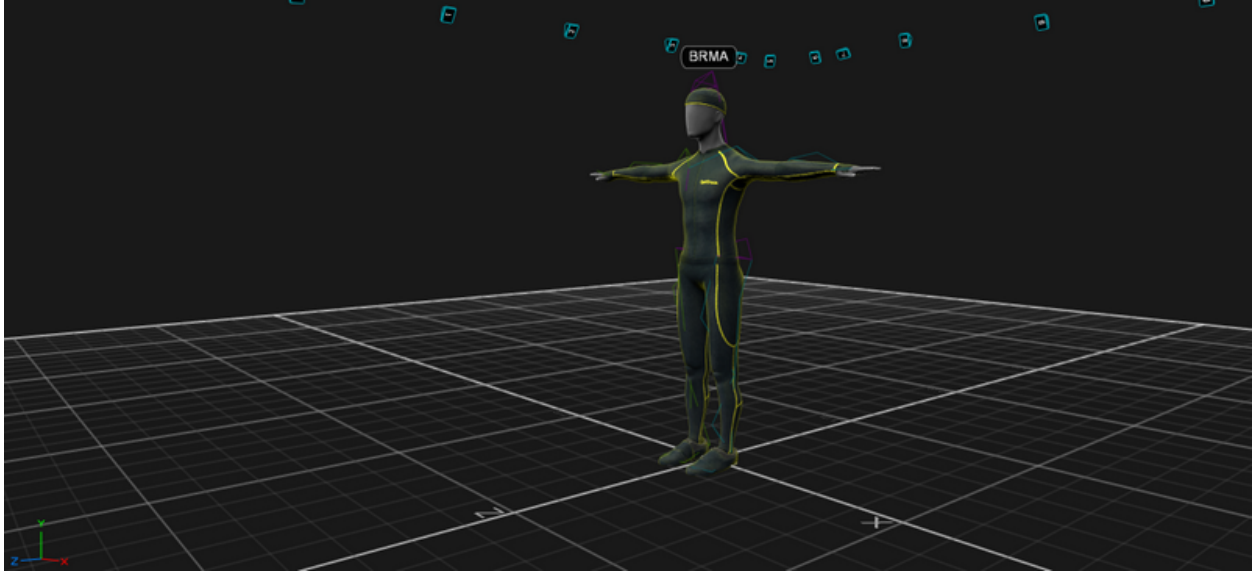
-----

Vicon: All

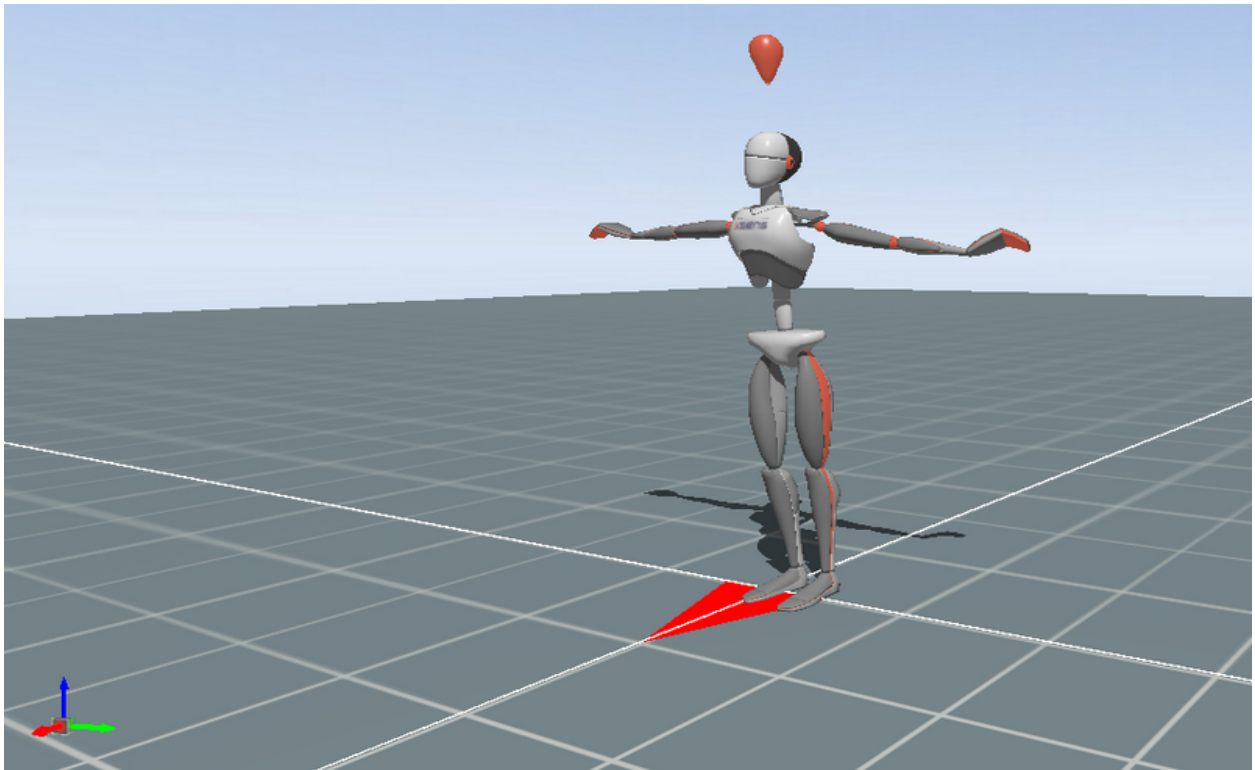


Why does my character's orientation and motion behave unexpectedly when I connect a device to Motion LIVE and press the "Set T-Pose" button?

Optitrack: +z



Xsens: +x

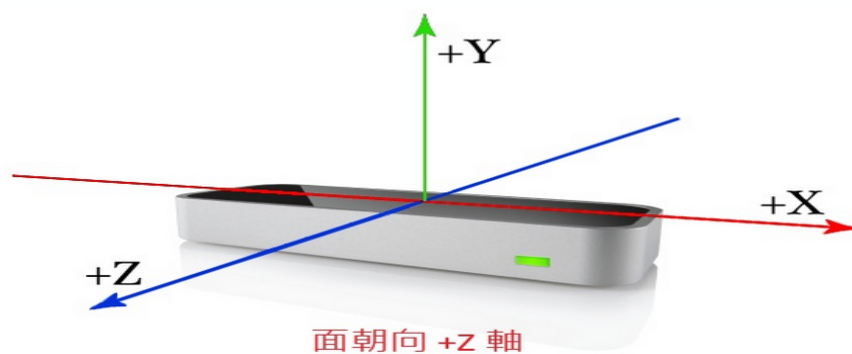


Why does my character's orientation and motion behave unexpectedly when I connect a device to Motion LIVE and press the "Set T-Pose" button?

Neuron/Neuron Gloves: +z

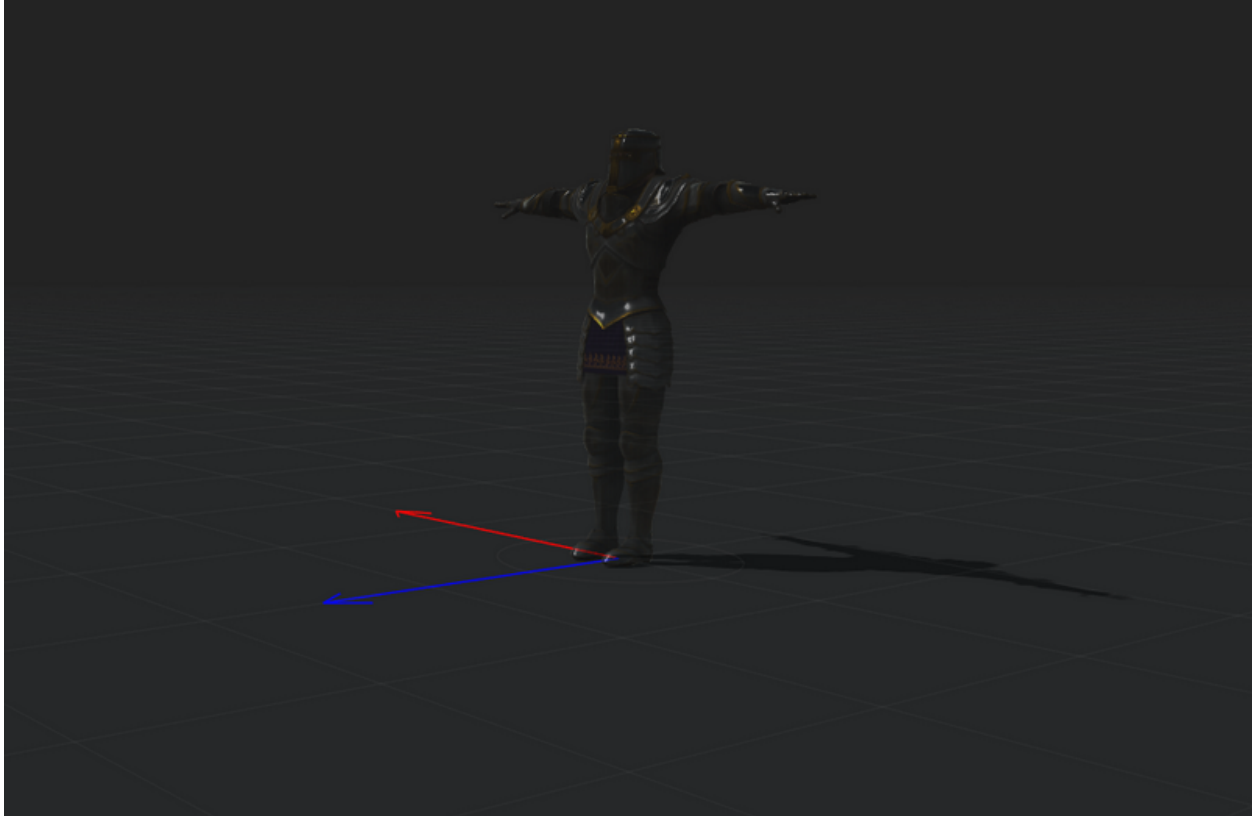


Leap Motion: +z



Why does my character's orientation and motion behave unexpectedly when I connect a device to Motion LIVE and press the "Set T-Pose" button?

Rokoko: +z



Reallusion FAQ

<https://kb.reallusion.com/Product/53230/Why-does-my-characters-orientation-and-motion-behave-unexpectedly-when-I-connect-a-device-to-Motion-LIVE-and-press-the-Set-T-Pose-button?>