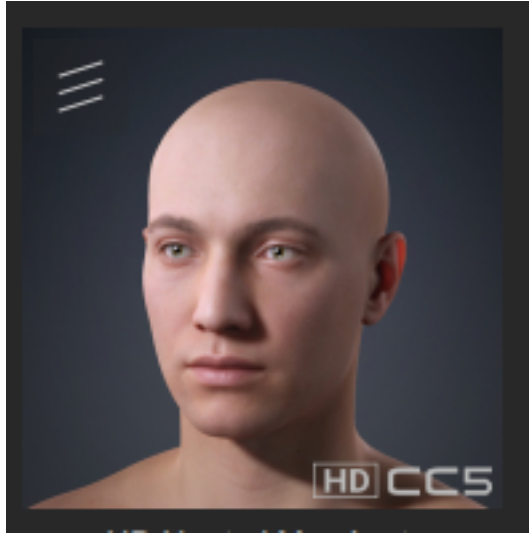


What are CC5 HD characters, how do they differ from CC3+ characters, and are their morph sliders mutually compatible?

CC5 HD characters are built on CC3+ base topologies with added subdivisions. Morph sliders between the two versions are fully cross-compatible.



CC5 HD Characters have the following characteristics:

1. Based on CC3+ base meshes
2. Support subdivisions (from level 1 and up)
3. Possess HD facial profiles

For more details, consult the following material:

- [Online Manual](#)
- [Official Landing Page](#)

Reallusion FAQ

<https://kb.reallusion.com/Product/53237/What-are-CC5-HD-characters-how-do-they-differ-from-CC3--char>