

Where can I find my videos and motion files after processing?

Upon successful generation, two files will be created:

1. The generated motion file
2. The trimmed video segment as a reference video

Reallusion does not store your uploaded videos or generated motion files. These assets are saved locally on your computer for private use.

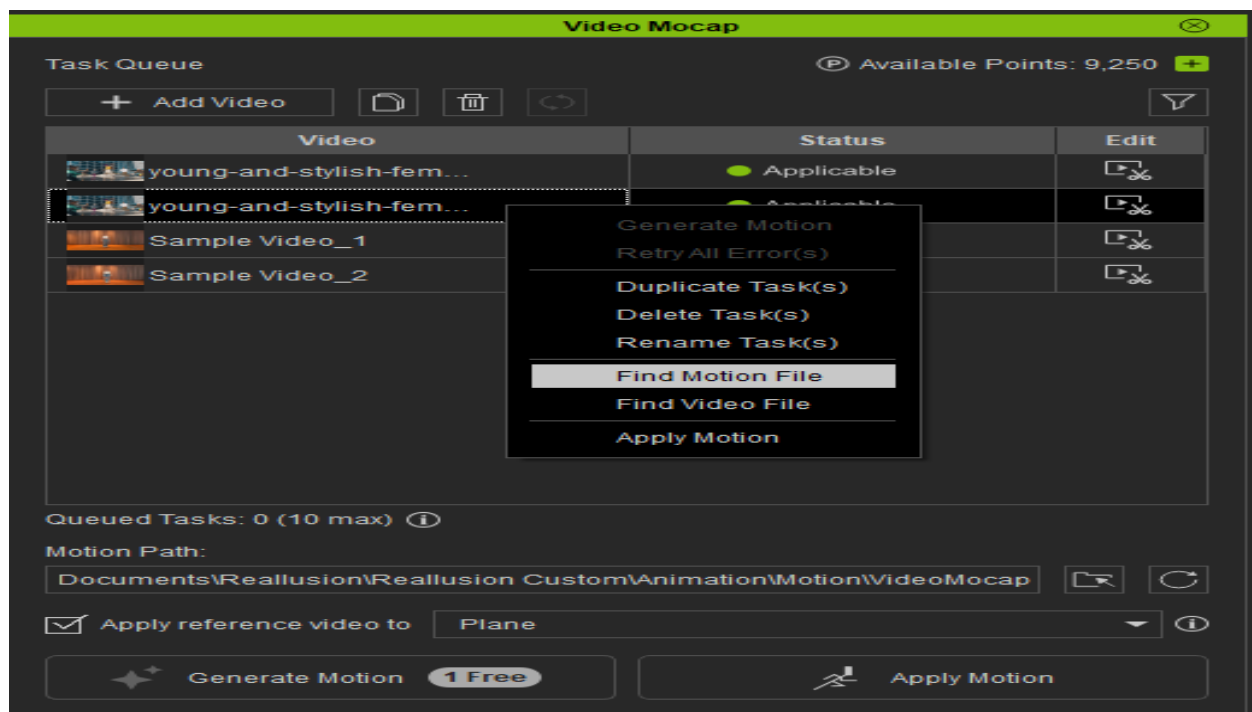
Default motion path:

C:\Users\Public\Documents\Reallusion\ReallusionCustom\Animation\Motion\VideoMocap

Default video path:

C:\Users\Public\Documents\Reallusion\ReallusionCustom\Media\Video\VideoMocap

Users are responsible for managing their generated assets, as Reallusion does not back up these files. Except in cases of program error, Reallusion is not liable for assets that are lost, damaged, or deleted on your local machine.



Where can I find my videos and motion files after processing?

Reallusion FAQ

<https://kb.reallusion.com/Product/53253/Where-can-I-find-my-videos-and-motion-files-after-processing>